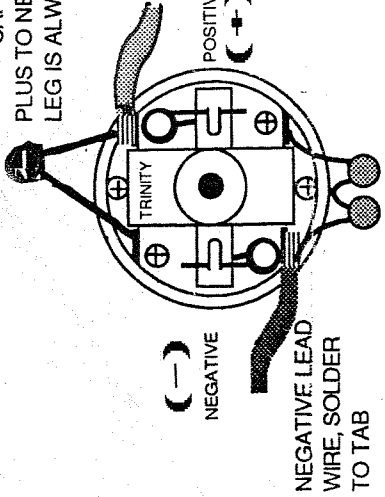


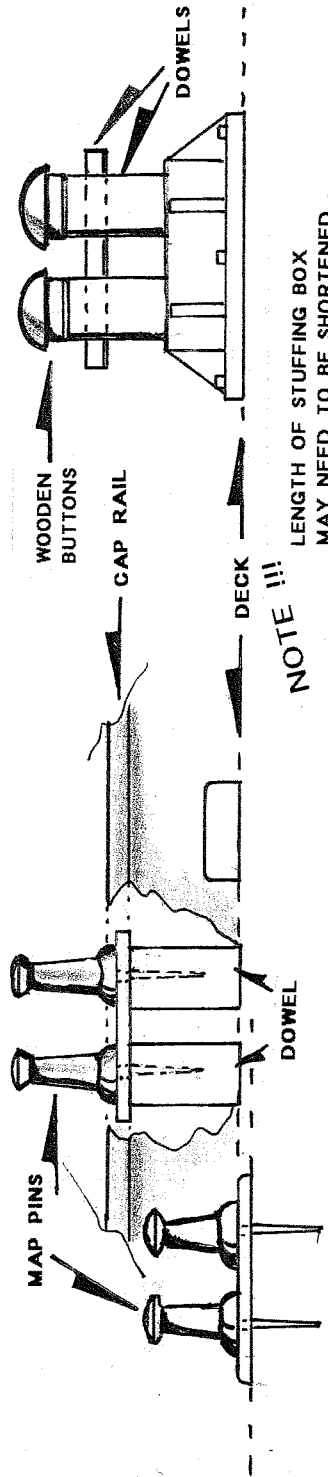
CAPACITOR GOES FROM PLUS TO NEGATIVE, THE MARKED LEG IS ALWAYS NEGATIVE.



SMALL CAPACITORS GO FROM PLUS TO MOTOR CAN AND NEGATIVE TO MOTOR CAN.

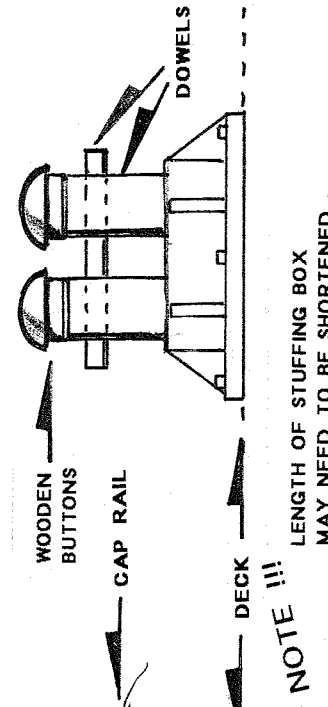
"TYPICAL"

SIDE BITT DETAIL



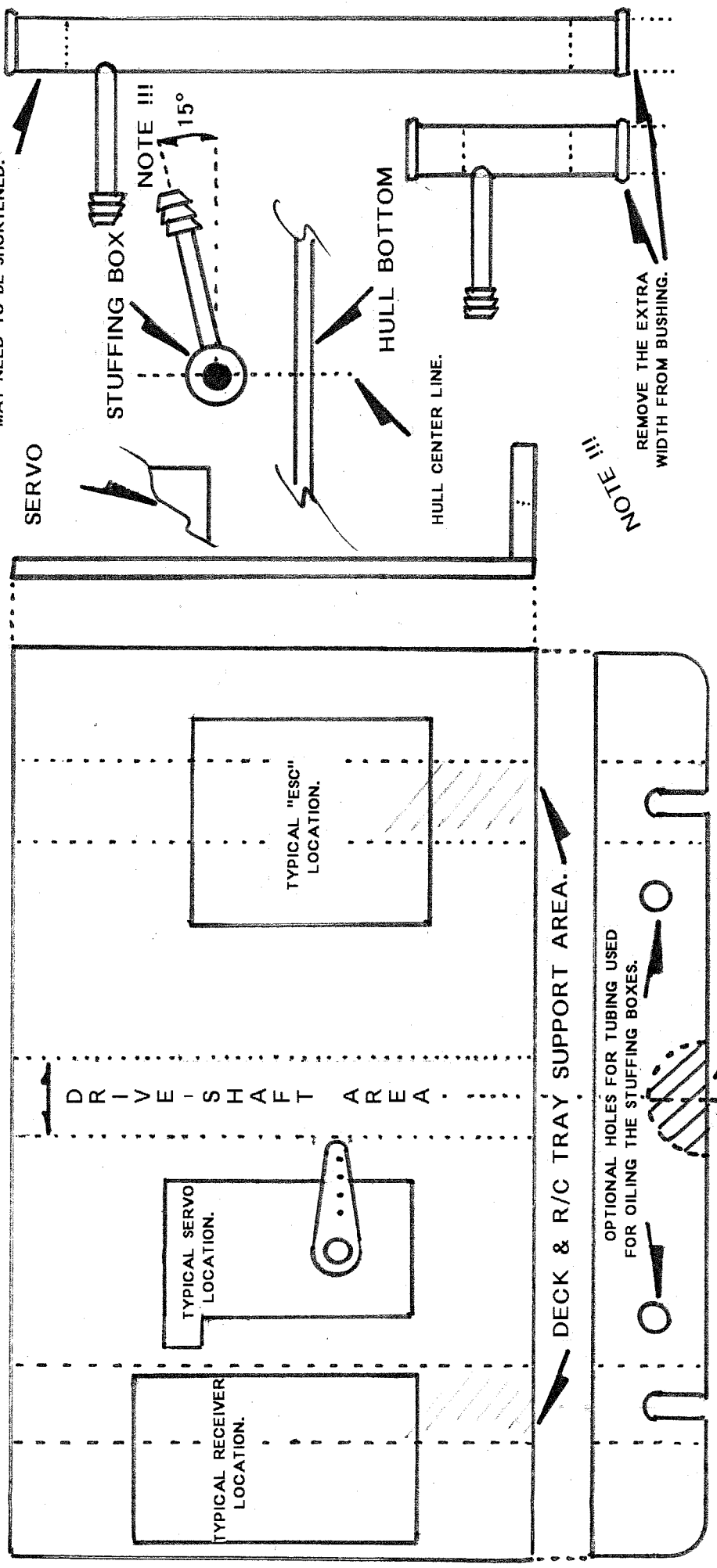
"TYPICAL"

"H" BITT



LENGTH OF STUFFING BOX MAY NEED TO BE SHORTENED.

NOTE !!!



THIS AREA WILL NEED TO BE REMOVED IF CURVED DECK LINE OPTION IS USED, WHEN SETTING UP THE DRIVE-LINE AT 5-9 DEGREES.

HULL CENTER LINE.

DRAWN BY:

Ken Kelly